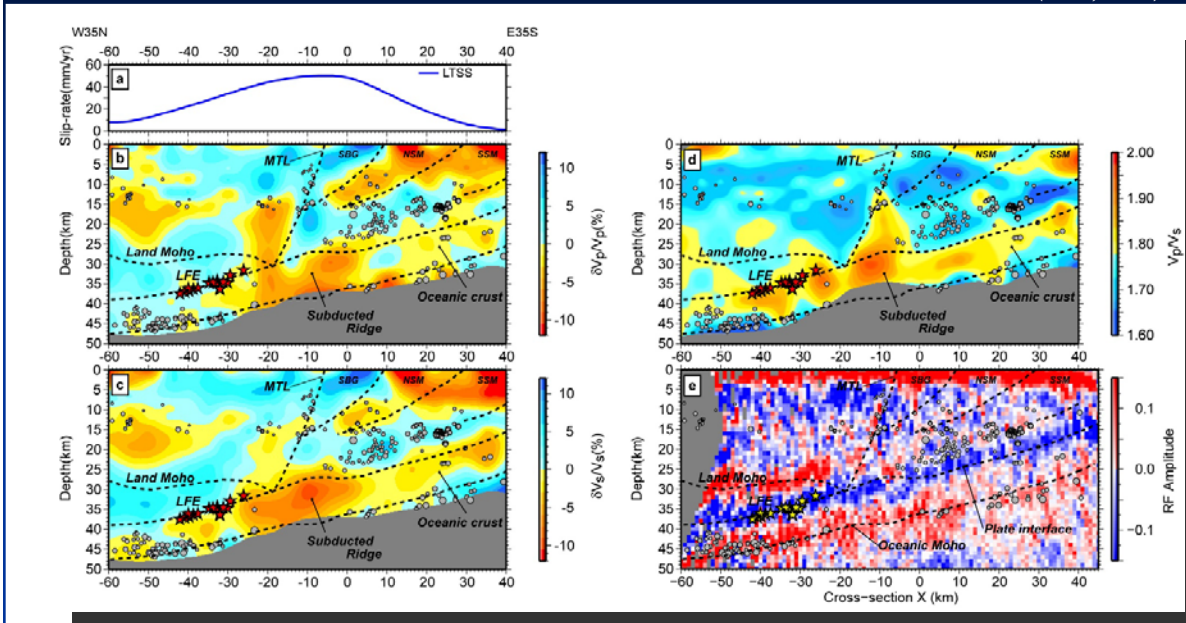


LFE regime (Down-dip variations of seismic anomalies within oceanic crust)

Kato et al (2010, GRL)

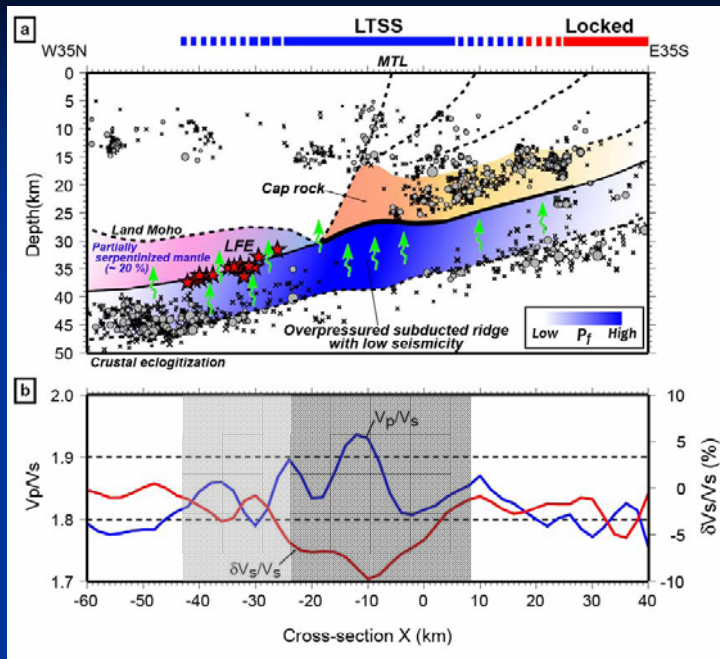


LFEs :

- 1) Align linearly above high V_p/V_s zone parallel to the plate interface, at the onset of contact between the mantle wedge corner and the top of the oceanic crust.
- 2) Amplitudes of the seismic anomalies are diminished compared with those of LTSSE area.

⇒ Partial leakage of fluids into the overlying mantle wedge nose ⇒

Inferred fluid pressures in the oceanic crust



P_f @ LTSSE centroid > P_f @ LFEs (Tremors)

Asymmetric distribution of fluid pressures correlates well with the slip-rate of the LTSS.

